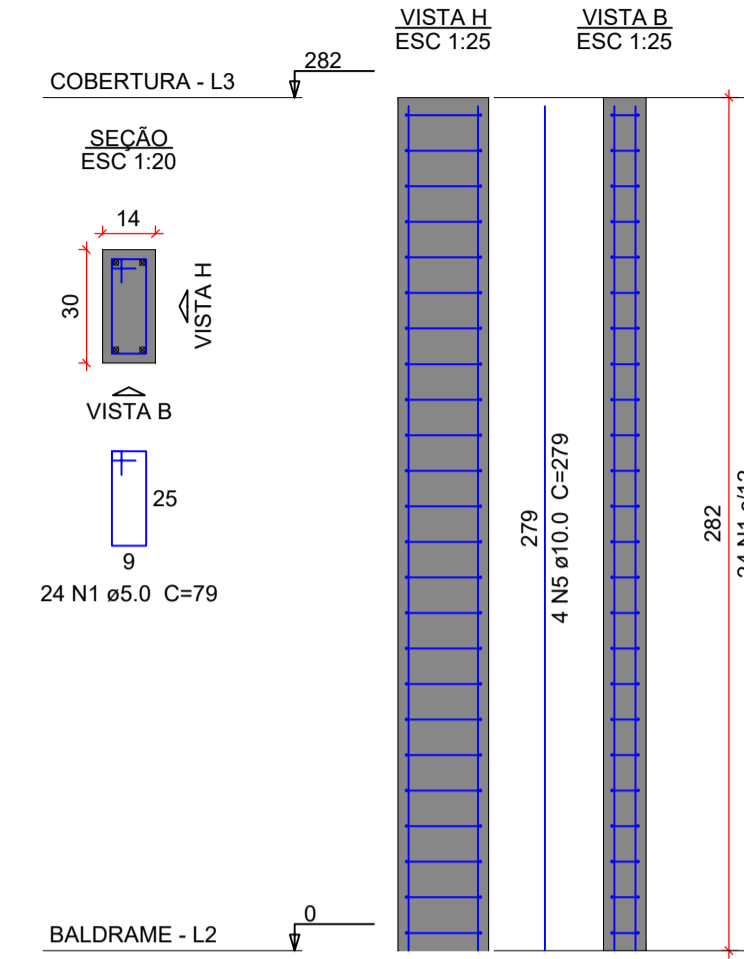
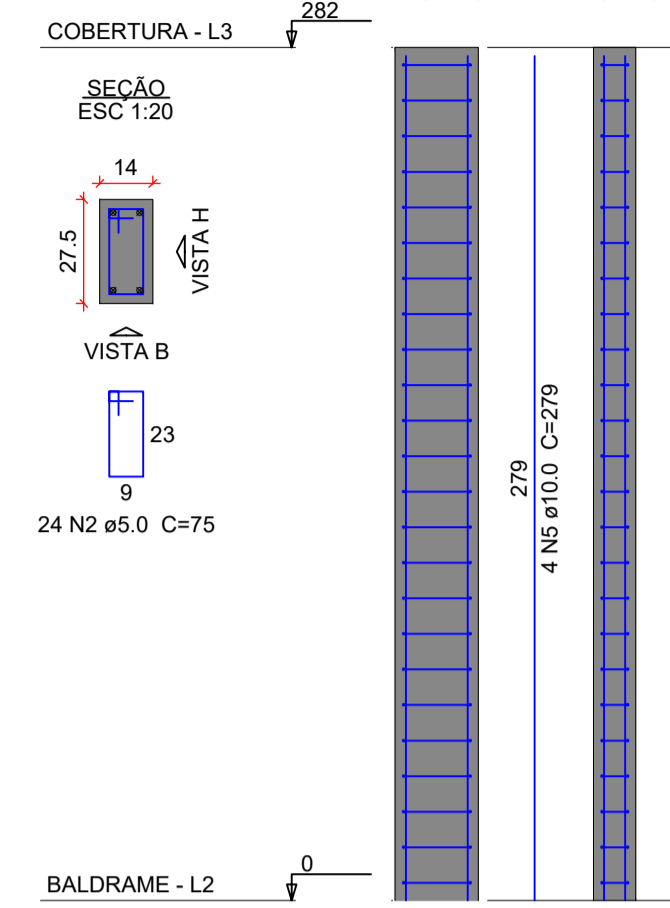


# PILARES

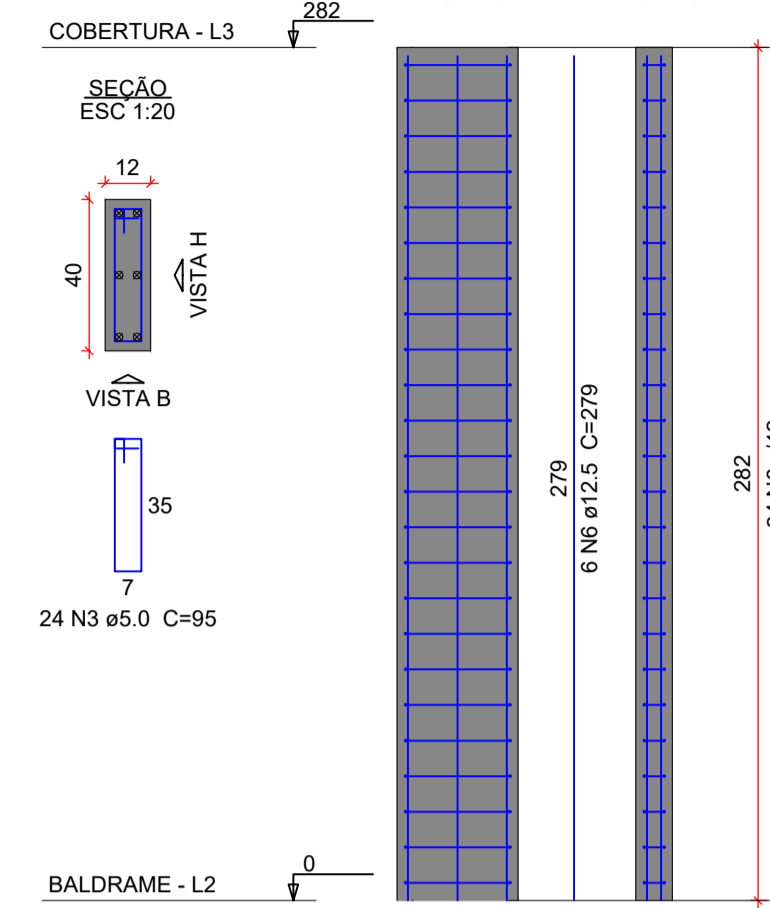
P1=P2=P4=P5=P6=P8=  
=P21=P24



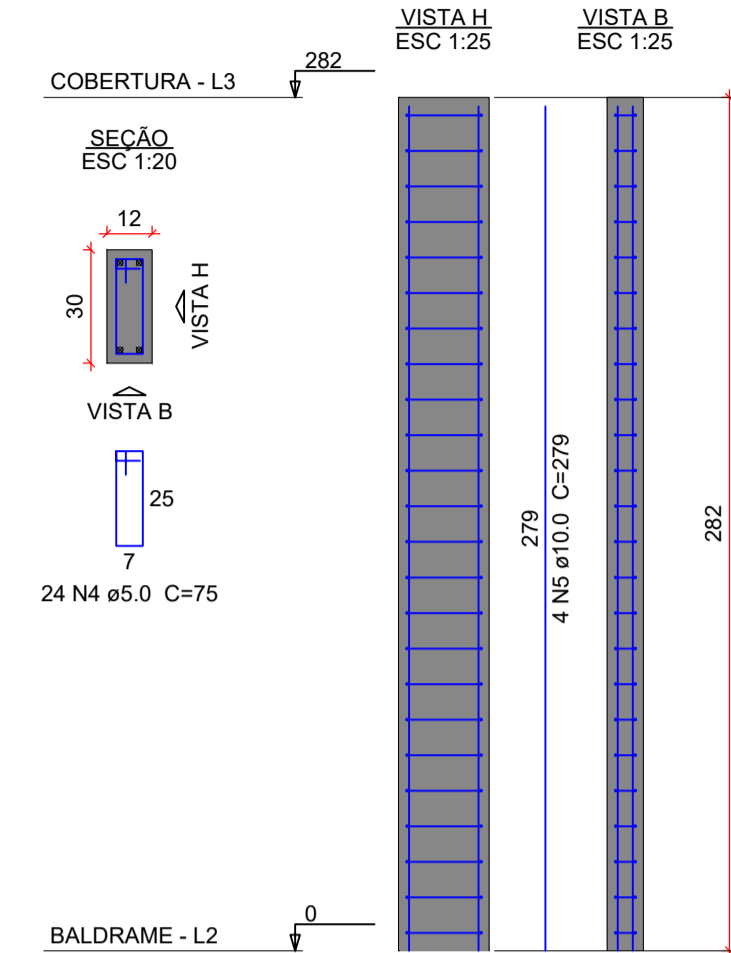
P11



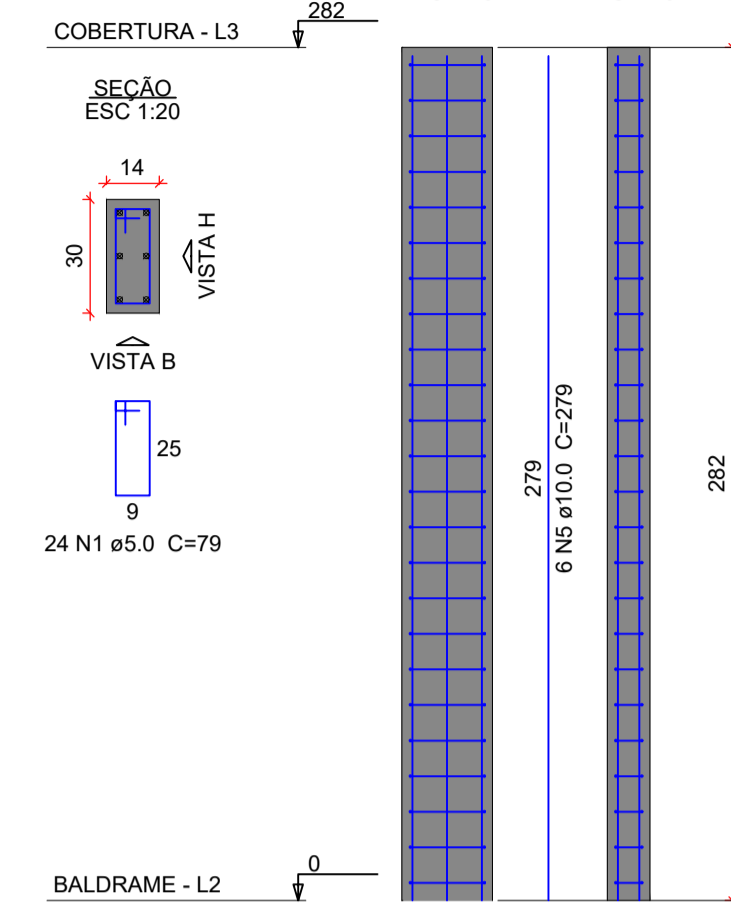
P13=P14



P3=P7=P10=P12=P15=  
=P16=P17=P18=P19=P20=  
=P22=P23=P25



P9



Relação do aço

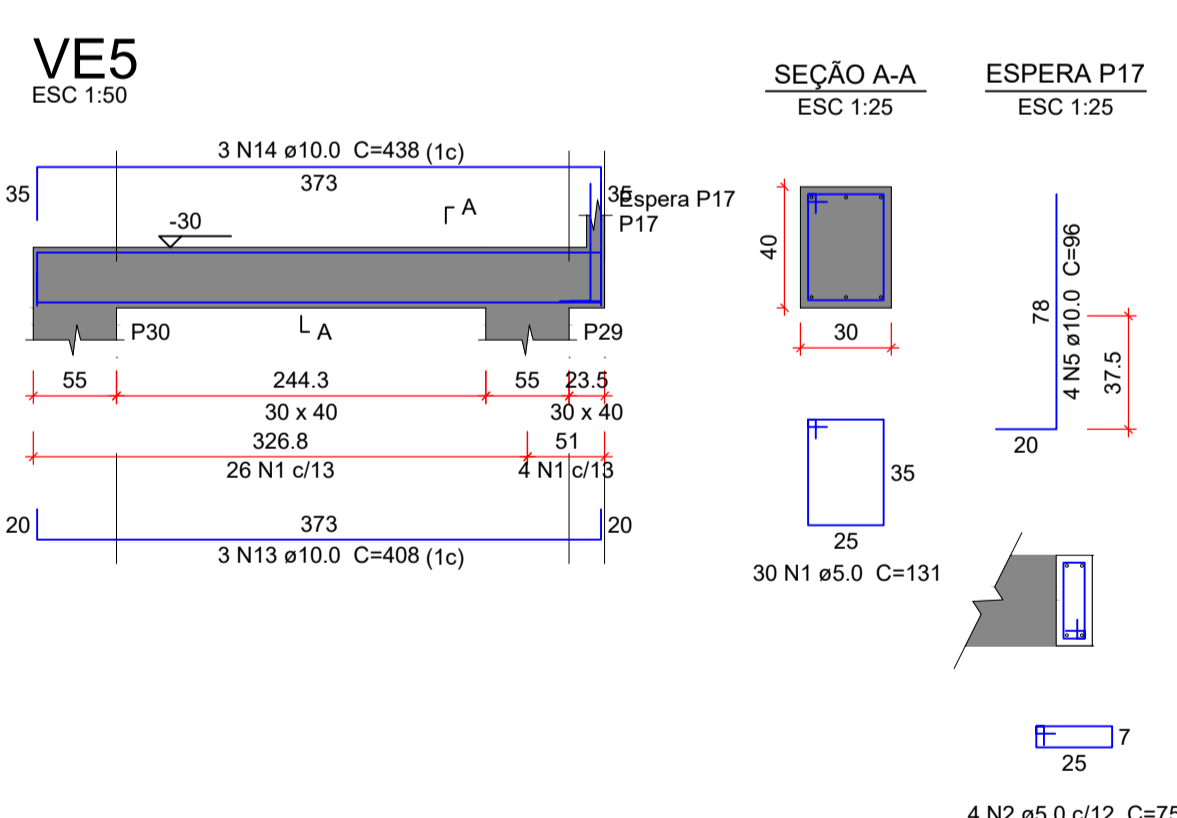
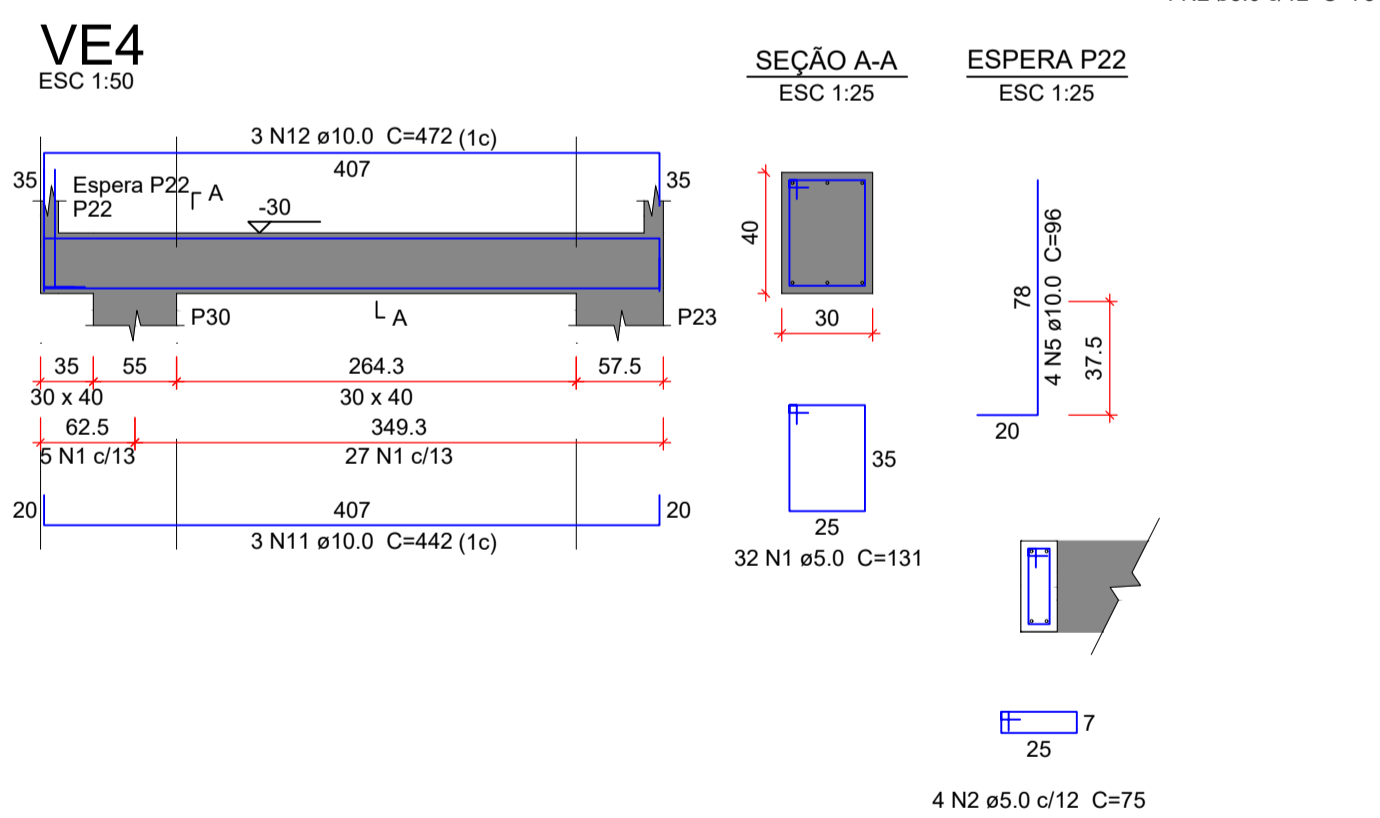
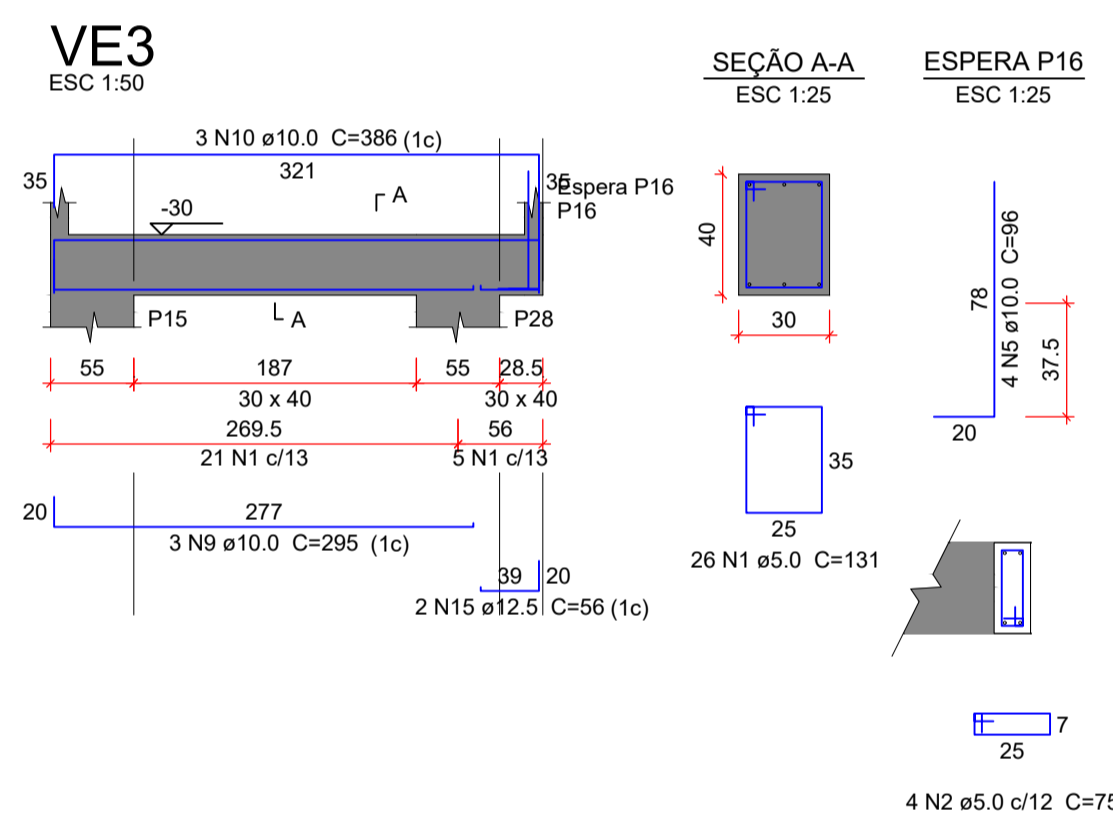
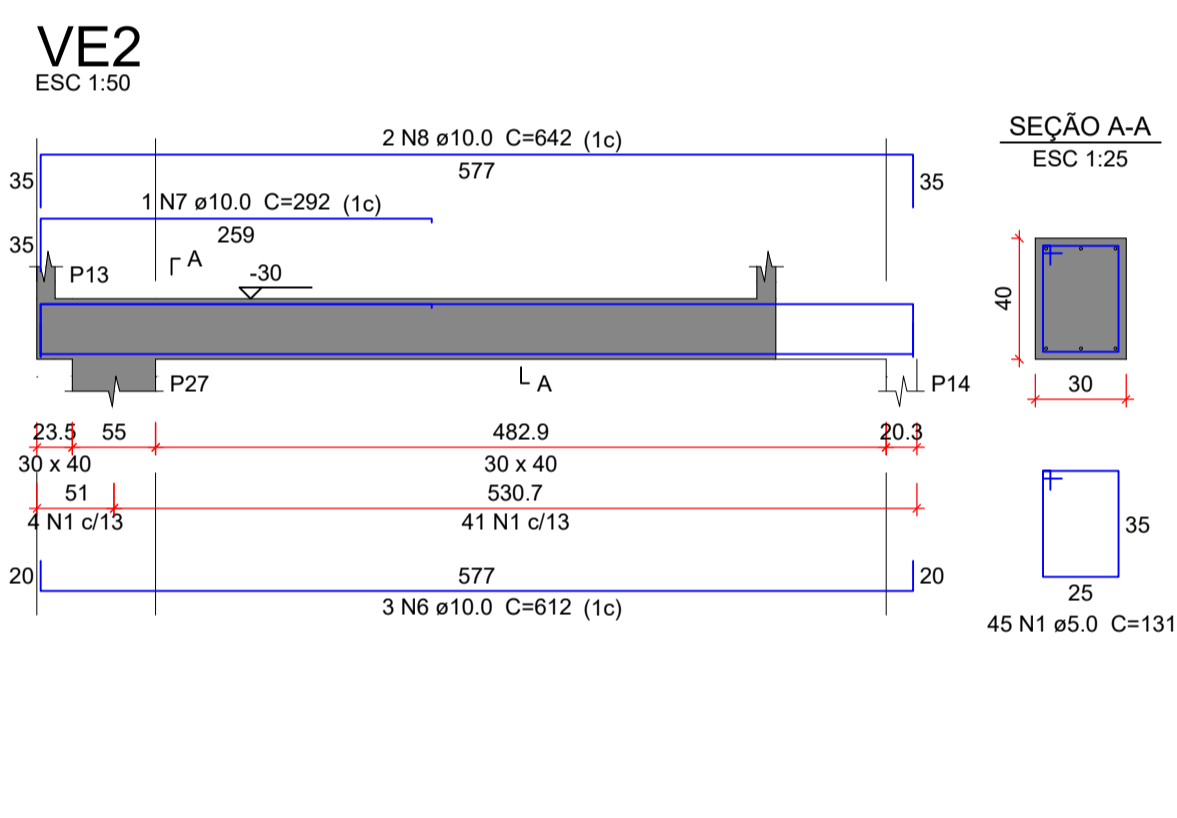
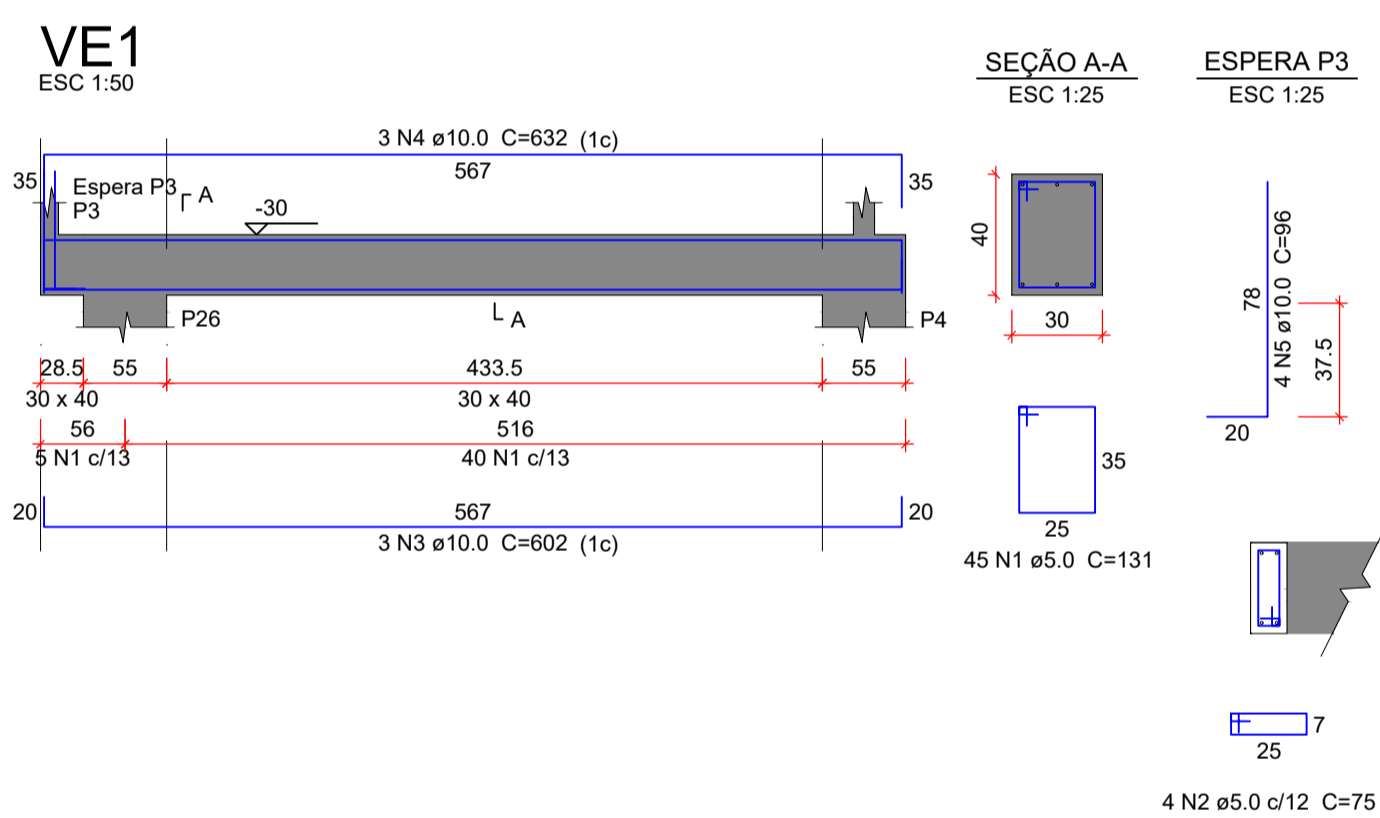
AÇO	N	DIAM (mm)	QUANT	C.UNIT (cm)	C.TOTAL (cm)
CA60	1	5.0	216	79	17064
	2	5.0	24	75	1800
	3	5.0	48	95	4560
	4	5.0	312	75	23400
CA50	5	10.0	94	279	26226
	6	12.5	12	279	3348

Resumo do aço

AÇO	DIAM (mm)	C.TOTAL (m)	PESO + 10 % (kg)
CA50	10.0	262.3	177.9
CA60	5.0	468.3	35.5
PESO TOTAL (kg)			
CA50		213.3	
CA60		79.4	

Volume de concreto (C-25) = 2.77 m³  
Área de forma = 61.34 m²

# VIGAS DE EQUILÍBRIO



Relação do aço

AÇO	N	DIAM (mm)	QUANT	C.UNIT (cm)	C.TOTAL (cm)
CA60	1	5.0	178	131	23318
	2	5.0	16	75	1200
CA50	3	10.0	3	602	1806
	4	10.0	3	532	1596
	5	10.0	16	96	1536
	6	10.0	3	612	1836
	7	10.0	1	292	292
	8	10.0	2	642	1284
	9	10.0	3	295	885
	10	10.0	3	386	1158
	11	10.0	3	442	1326
	12	10.0	3	472	1416
	13	10.0	3	408	1224
	14	10.0	3	438	1314
	15	12.5	2	56	112

Resumo do aço

AÇO	DIAM (mm)	C.TOTAL (m)	PESO + 10 % (kg)
CA50	10.0	159.8	108.3
CA60	5.0	245.2	41.6
PESO TOTAL (kg)			
CA50		109.5	
CA60		41.6	


Volume de concreto (C-25) = 1.97 m³  
Área de forma = 18.02 m²

ORGÃOS PÚBLICOS

## PROJETO ESTRUTURAL

TIPO DE EMPREENDIMENTO	DATA
PÚBLICO	MAR/2026

CONTEÚDO	PRANCHA
ARMAÇÃO PILARES ARMAÇÃO VIGAS DE EQUILÍBRIO	07/10

 **PREFEITURA DO MUNICÍPIO DE MERCEDES**  
DEPARTAMENTO DE ENGENHARIA  
RUA DR. OSVALDO CRUZ, 555 CEP 85998-000 MERCEDES-PR FONE: (45) 3256-8045

PROJETO:	ENG. CIVIL CRISTIAN COMIN CREA: PR-2145677/D
EXECUÇÃO:	
PROPRIETÁRIO:	MUNICÍPIO DE MERCEDES CNPJ: 95.719.373/0001-23

OBRA: AMPLIAÇÃO CENTRO DIA  
LOCAL: RUA PROF. SALVINO VANDERLINDE - LOTE 05 - Q 04 - LOT. POR DO SOL - MERCEDES - PR  
PROPRIETÁRIO: MUNICÍPIO DE MERCEDES